



InstaShow™

Plug and play for wireless Full HD presentations

*True Plug & Play
*No Software
*Wireless 802.11ac
*InstaVideo

*Auto Channel Selection
*Video and Audio Support
*Assured Performance
*Extended Desktop

| Feature | |
|--------------------------|--|
| Model name | WDC10C |
| Product name | InstaShow™ |
| Color | Black |
| Video outputs | HDMI 1.4, comply with HDCP |
| Frame Rate | Up to 60 fps depending on environment |
| Output resolution | 800 x 600, 1280x720 (720P), 1024 x 768 (XGA), 1280 x 768, 1280x800(VXGA), 1280 x 1024, 1280 x 960, 1360 x 768, 1440 x 900, 1400 x 1050, 1680 x 1050, 1920x1080 (1080p) |
| Input resolution | Up to 1920x1080 |
| Simultaneous connections | 16 pcs |
| Audio | Stereo, Radio quality 16bits 48KHz |
| Wireless | IEEE 802.11ac, 5GHz, 2T2R |
| Data rate wireless | Up to 867Mbps |
| Authentication protocol | WPA2 (WPA2-PSK (Pre-Shared key) / WPA2-Enterprise) |
| Security (encryption) | AES 128 bit |
| Support platform | Windows, MAC, Chrome. Any OS has USB-C with Thunderbolt 3 or USB-C with Display Port Alt Mode(DP version higher or equal than 1.2) |
| Reach | Max. 8m between InstaShow Button and InstaShow Host |
| Temperature range | Operating: 0°C to +40°C (+32°F to +104°F) Storage: -10°C to +60°C (+14°F to +140°F) |
| Humidity | Storage: 5% to 90% relative humidity, non-condensing Operation: 10% to 80% relative humidity, non-condensing |

| InstaShow Button | | | |
|------------------|--|-------------------|-------------------|
| Cable | USB Type-C | Power Supply | DC 5V±10%, 0.9A |
| Reset Button | x1 | Power Consumption | Normal: 4.5W |
| Mode Key | x1 | Dimension (WxHxD) | 84.5x188.3x19.9mm |
| LED | *Red (boosting), Green (wifi connected), Blue (presenting) | Weight | 87.3g |

| InstaShow Host | | | |
|----------------|--|--|----------------------------------|
| Power Button | x1 | Power Supply | DC 5V±10%, 1.5A |
| Pairing Key | x1 | | Normal: 5W |
| LAN | x1 (10/100 Mbps) | Power Consumption | Network standby: 2W |
| Video Output | x1 HDMI 1.4 (video and audio) | | HDMI standby: 0.02W |
| LED | *Red (boosting), Green (ready for connection), Blue (presenting) | Dimension (WxHxD) (not include rubber feet) | 110x110x27mm (99mm with antenna) |
| DC Power Jack | x1 (micro USB) | Weight | 150g |

| Cradle | | | |
|-----------|------------------|--------|------|
| Dimension | 85*97.5*170.4 mm | Weight | 630g |

| Package | | | |
|------------------|---------------------------------------|------------------------|----|
| InstaShow Button | x2 | Adapter | x1 |
| InstaShow Host | x1 | Velcro Strap | x1 |
| Cradle | x1 | Quick Start Guide | x1 |
| USB Power Cable | x1 (150cm, USB Type A 3.0, micro USB) | Safety Statement | x1 |
| HDMI Cable | x1 (80cm) | Double-side Sponge Tap | x1 |
| Antenna | x2 (Black) | Rubber Feet | x4 |
| Screws | x4 | | |

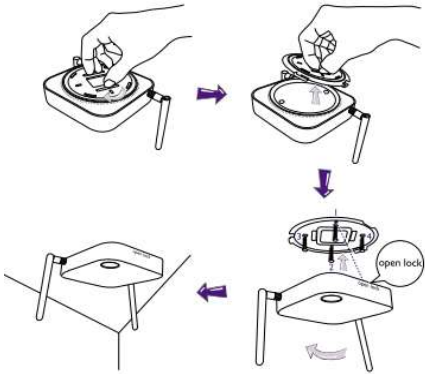
Go to: <http://www.benq.com/product/projector/INSTASHOW-WDC10C/>

* Please find detail LED behavior in the user manual.

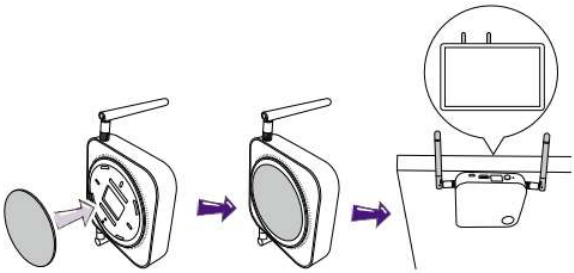
**Wireless connection speed is depended on wireless environment.

Installation of InstaShow Host

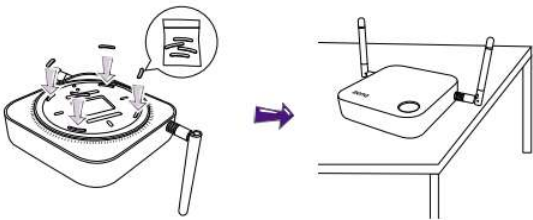
A. Attaching InstaShow Host to the ceiling



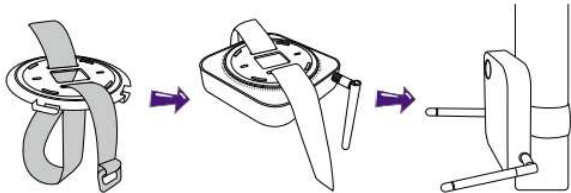
B. Attaching InstaShow Host to a display



C. Placing InstaShow Host on a table

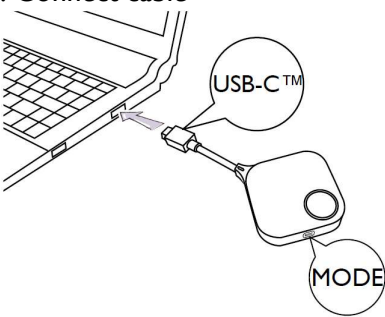


D. Attaching InstaShow Host to a ceiling mount

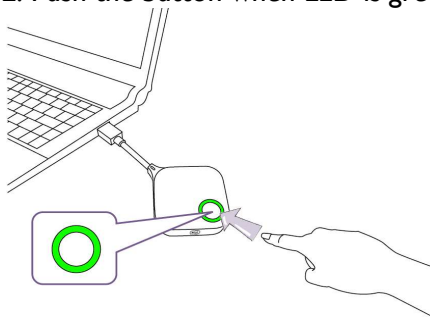


Setup InstaShow Button to Present

Step1. Connect cable



Step2. Push the button when LED is green



Dimension





InstaShow™ Button Kit

Plug and play for wireless Full HD presentations

- *True Plug & Play
 - *No Software
 - *Wireless 802.11ac
 - *InstaVideo
- *Auto Channel Selection
 - *Video and Audio Support
 - *Assured Performance
 - *Extended Desktop

| Feature | |
|--------------------------|---|
| Model name | WDC10C |
| Product name | InstaShow™ |
| Color | Black |
| Video outputs | HDMI 1.4, comply with HDCP |
| Frame Rate | Up to 60 fps depending on environment |
| Output resolution | 800 x 600, 1280x720 (720P),1024 x 768 (XGA),1280 x 768,1280x800(WXGA),1280 x 1024,1280 x 960,1360 x 768,1440 x 900,1400 x 1050,1680 x 1050, 1920x1080 (1080p) |
| Input resolution | Up to 1920x1080 |
| Simultaneous connections | 16 pcs |
| Audio | Stereo, Radio quality 16bits 48KHz |
| Wireless | IEEE 802.11ac, 5GHz, 2T2R |
| Data rate wireless | Up to 867Mbps |
| Authentication protocol | WPA2 (WPA2-PSK (Pre-Shared key) / WPA2-Enterprise) |
| Security (encryption) | AES 128 bit |
| Support platform | Windows, MAC, Chrome. Any OS has USB-C with Thunderbolt 3 or USB-C with Display Port Alt Mode(DP version higher or equal than 1.2) |
| Reach | Max. 8m between InstaShow Button and InstaShow Host |
| Temperature range | Operating: 0°C to +40°C (+32°F to +104°F) Storage: -10°C to +60°C (+14°F to +140°F) |
| Humidity | Storage: 5% to 90% relative humidity, non-condensing Operation: 10% to 80% relative humidity, non-condensing |

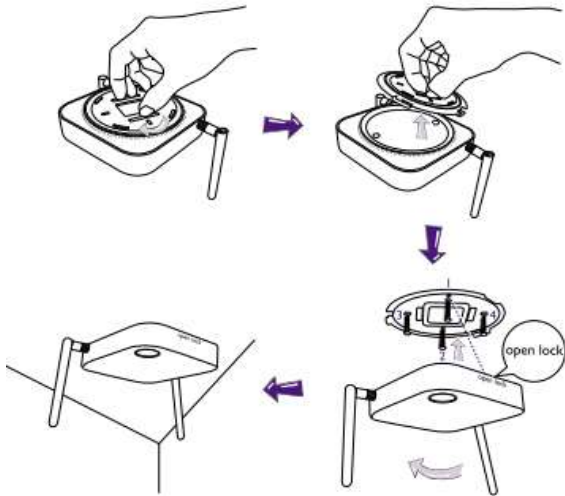
| InstaShow Button | | | |
|------------------|--|-------------------|-------------------|
| Cable | USB Type-C | Power Supply | DC 5V±10%, 0.9A |
| Reset Button | x1 | Power Consumption | Normal: 4.5W |
| Mode Key | x1 | Dimension (WxHxD) | 84.5x188.3x19.9mm |
| LED | *Red (boosting), Green (wifi connected), Blue (presenting) | Weight | 87.3g |
| Cradle | | | |
| Dimensioin | 85*97.5*170.4 mm | Weight | 630g |
| Package | | | |
| InstaShow Button | x2 | | |
| | | | |
| Cradle | x1 | Quick Start Guide | x1 |
| | | Safety Statement | x1 |

Go to: <http://www.benq.com/product/projector/INSTASHOW-WDC10C/>

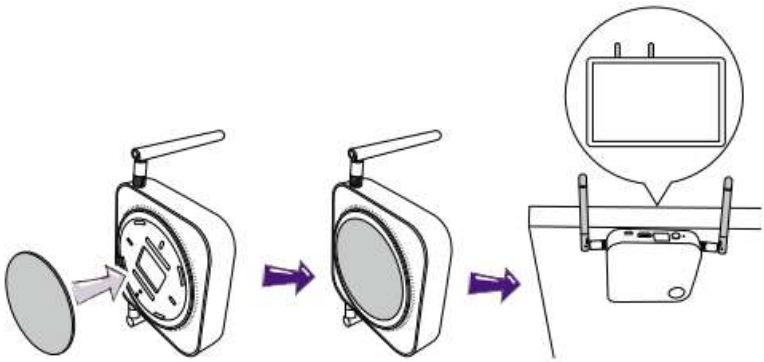
- * Please find detail LED behavior in the user manual.
- **Wireless connection speed is depended on wireless environment.

Installation of InstaShow Host

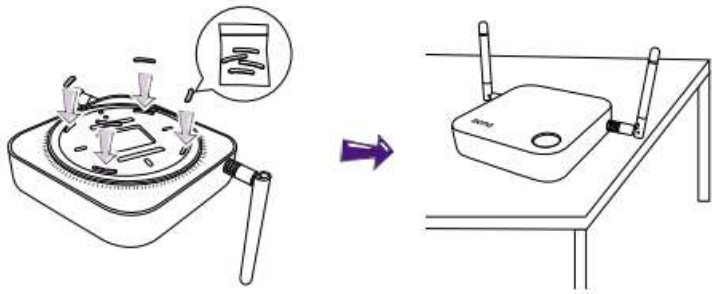
A. Attaching InstaShow Host to the ceiling



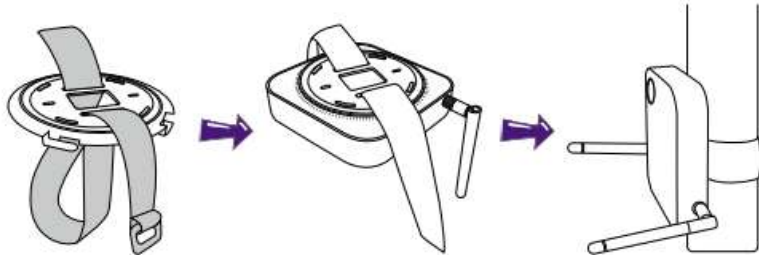
B.Attaching InstaShow Host to a display



C.Placing InstaShow Host on a table

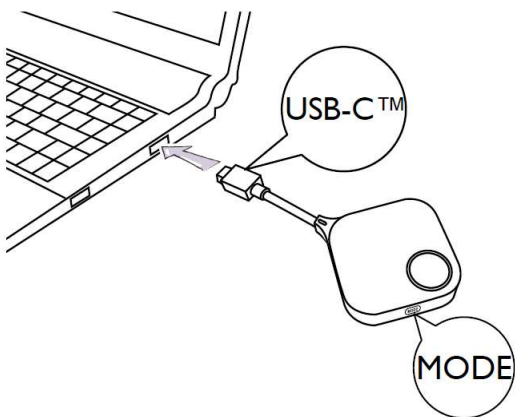


D.Attaching InstaShow Host to a ceiling mount

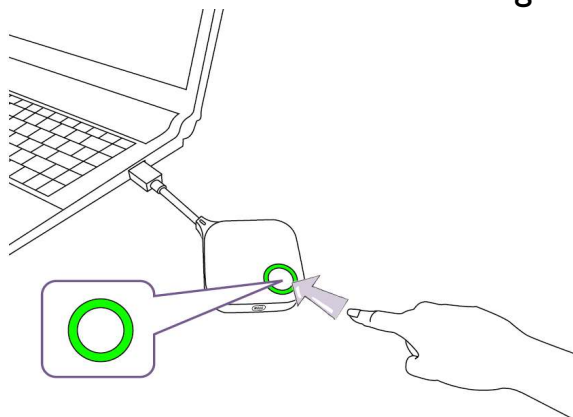


Setup InstaShow Button to Present

Step1. Connect cable



Step2. Push the button when LED is green



Dimension

