

# Specifications



| Model  | RP Series  | RM Series   | RE Series  |
|--|--|---|--|
| <b>Panel</b>                                   |  |   |  |
| Screen Size                                    | 65", 75", 86"  | 55", 65", 75", 86"  | 65", 75", 86"  |
| Panel Type                                     | IPS  | IPS   | IPS  |
| Resolution                                     | UHD 4K   | UHD 4K  | UHD 4K   |
| Brightness (Typical)                           | 65": 350 nits<br>75": 450 nits<br>86": 400 nits  | 55": 350 nits<br>65": 350 nits<br>75": 350 nits<br>86": 350 nits  | 65": 400 nits<br>75": 450 nits<br>86": 400 nits  |
| Dynamic Contrast Ratio (Typical)               | 30,000:1   | 30,000:1  | 30,000:1   |
| View Angle (Horizontal / Vertical)             | 178°/178°  | 178°/178°   | 178°/178°  |
| Response Time (ms)                             | 8ms  | 8.5ms   | 8ms  |
| Panel bit                                      | 10 bit   | 10 bit  | 10 bit   |
| Light Life (Typical)                           | 50,000 hours   | 50,000 hours  | 50,000 hours   |
| Display Orientation                            | Landscape  | Landscape   | Landscape  |
| <b>Glass</b>                                   |  |   |  |
| Hardness                                       | 4mm, 9H  | 3mm, 9H(RMS502) 4mm, 9H   | 4mm, 9H  |
| Anti-Glare                                     | AG80   | AG75  | AG75   |
| <b>Touch</b>                                   |  |   |  |
| Touch Technology                               | Fine IR+   | Fine IR   | Fine IR  |
| Numbers of Touch                               | Up to 20 points  | Up to 20 points   | Up to 20 points  |
| Bonding Technology                             | Zero Bonding   | Zero Bonding  | Zero Bonding   |
| <b>Connectivity &amp; Sensor</b>               |  |   |  |
| Connector                                      | VGA x1, HDMI 2.0 x3, HDMI Out x1, 3.5mm Audio Line in/Mic in x1, 3.5mm Audio Line out x1, SPDIF Audio out x1, USB 2.0 x3, USB 3.0 x2, USB B Touch Port x3, Type C x1, RS232 x1, RJ45 x1, OPS Slot x1 | VGA x1, HDMI 2.0 x3, HDMI Out x1, 3.5mm Audio Line in/Mic in x1, 3.5mm Audio Line out x1, SPDIF Audio out x1, USB 2.0 x2, USB 3.0 x3, USB B Touch Port x2, RS232 x1, RJ45 x1, OPS Slot x1 | VGA x1, DP x1, HDMI 2.0 x3, HDMI Out x1, 3.5mm Audio Line out x1, PC Audio Input x1, SPDIF Audio out x1, USB 2.0 x4, USB 3.0 x2(OPS follow), USB B Touch Port x2, RS232 x1, RJ45 x2, OPS Slot x1 |
| Camera   | Optional   | Optional  | Optional   |
| Built-in Microphone                            | Array Microphone x8  | No  | No   |
| Built-in speaker                               | Speakers 16W x2 & Subwoofer 15W x1   | Speakers 16W x2   | Speakers 15W x2  |
| Sensor   | NFC Sensor x1, Motion Sensor (PIR) x3, Air Quality Sensor x1, Light Sensor x1  | Light Sensor  | Light Sensor   |
| <b>RAM &amp; ROM</b>                           |  |   |  |
| RAM  | 4GB  | 4GB   | 3GB  |
| Storage  | 32GB   | 32GB  | 32GB   |
| <b>Mechanical</b>                              |  |   |  |
| Weight (Without / With Packing) (kg)           | 65": 44 kg / 56 kg<br>75": 61 kg / 78 kg<br>86": 79 kg / 97.5 kg   | 55": 29.3 kg / 37.05 kg<br>65": 41.2 kg / 52.7 kg<br>75": 54.4 kg / 76.1 kg<br>86": 70.2 kg / 99.6 kg   | 65": 39 kg / 53.5 kg<br>75": 54 kg / 73 kg<br>86": 69 kg / 90.5 kg   |
| Dimension (WxHxD) (mm)                         | 65": 1505.9 x 951.0 x 121.5<br>75": 1735.5 x 1085.8 x 130.7<br>86": 1988.8 x 1229.8 x 138.4  | 55": 1268.1 x 814.5 x 115.6<br>65": 1488.7 x 938.9 x 115.6<br>75": 1709.4 x 1062.0 x 115.8<br>86": 1957.1 x 1201.8 x 115.8  | 65": 1506.28 x 901.32 x 96.1<br>75": 1735.98 x 1034.52 x 103.75<br>86": 1991.57 x 1182.61 x 112.8  |
| Wall Mounting (VESA) (mm)                      | 4 holes (400 x 200mm) Screw M8 x 25mm  | 4 holes (400 x 200mm) Screw M8 x 25mm   | 4 holes (800 x 400mm) Screw M8 x25mm   |
| Wall Mount                                     | Included   | Included  | Included   |
| <b>Healthcare Features</b>                     |  |   |  |
| Germ-Resistant Screen                          | Yes  | Yes   | Yes  |
| Flicker-Free                                   | Yes  | Yes   | Yes  |
| Low Blue-Light                                 | Yes  | Yes   | Yes  |
| Air Quality Sensor                             | Yes  | No  | No   |
| <b>Package / Accessory</b>                     |  |   |  |
| Remote Controller (with 2.4G dongle & Battery) | x1   | x1  | x1   |
| Power Cord                                     | By Region  | By Region   | By Region  |
| Cable  | VGA(3m) x1, HDMI(3m) x1, USB for touch (3m) x1   | VGA(5m) x1, HDMI(1.5m) x1, USB for touch (3m) x1  | VGA(1.5m) x1, HDMI(3m) x1, USB for touch (3m) x1, TYPE-C(1.5m) x1  |
| Quick Start Guide                              | x1   | x1  | x1   |
| User's Manual Electronic File                  | x1   | x1  | x1   |
| Touch Pen                                      | x2   | x2  | x2   |
| <b>Optional</b>                                |  |   |  |
| Optional Accessory                             | InstaShow,WiFi Dongle, OPS,Trolley, Camera   | InstaShow,WiFi Dongle, OPS,Trolley, Camera  | InstaShow,WiFi Dongle, OPS,Trolley, Camera   |

# Keep Students Collaborative and their Health in Mind

## Endless Collaborative Possibilities with ClassroomCare™ Interactive Flat Panels



©2021 BenQ Asia Pacific Corp. Specifications may vary depending on the region. Please visit your local vendor for details. Actual product features and specifications are subject to change without notice. This material may include corporate names and the trademarks of third parties which are the property of those third parties.

Dealer's Stamp



Scan to read more info about ClassroomCare IFP series



# Invisible Threats Put Students at Risk

Poor indoor air quality, germs, and harmful blue-light from LCD panels put students at risk in the classroom.



Students don't focus as well when their health is affected



**The facts are**

**100** ↑  
Times Higher  
pollutants indoors can be 100 times higher than outdoor levels

High Levels of **CO<sub>2</sub>** ↑  
can cause drowsiness and poor student performance



Germs cause students to get sick and miss school



**The facts are**

**4.5**  
Sick Days  
are taken by K-12 students per year

Respiratory (colds and flu) and Gastrointestinal illness (norovirus and rotavirus) are commonly spread in schools

**\$10.7 Billion**  
Losses  
per year in the US due to student absenteeism



Student vision impairment causes poorer learning outcomes



**The facts are**

**7**  
Hours of Screen Time  
per day are spent by teens on entertainment

**1 Billion**  
People World Wide  
have a preventable vision impairment



How BenQ ClassroomCare™ Keeps Students Focused and Healthy



**BenQ ClassroomCare™ Gives Students and Teachers Engaged and Germ-Free Learning Environment**

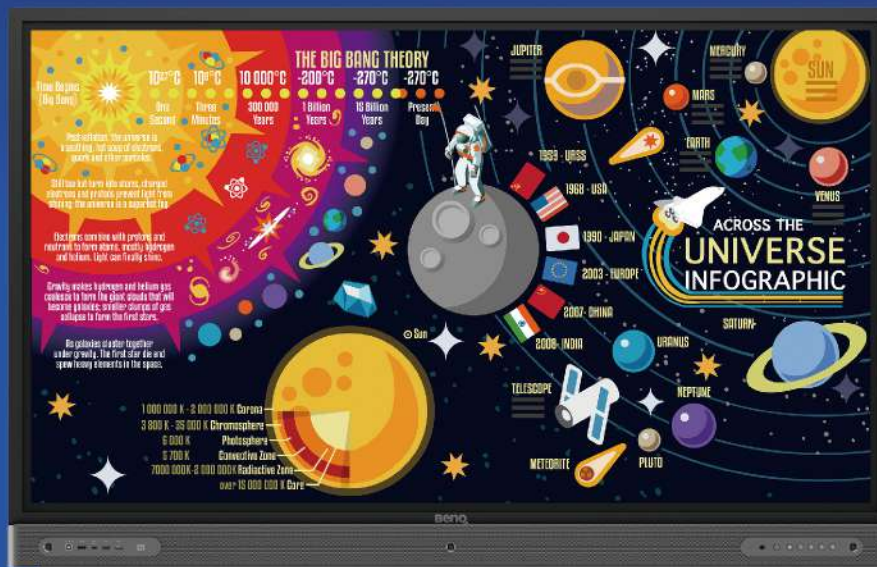
Sources:  
U.S. Environmental Protection Agency, "Why Indoor Air Quality is Important to Schools"  
CO<sub>2</sub> Meter, "Indoor Air Quality In the Classroom"  
The Active Times, "These Are the Dirtiest Places in a School"  
Happi, "The Impact of Hand Hygiene On School Absenteeism"  
ABC News, "Teens spend more than 7 hours on screens for entertainment a day: Report"  
World Health Organization, "Blindness and vision impairment"

# A Digital Transformation for the Future Classroom

The Advanced ClassroomCare™ Interactive Flat Panel Balances Collaboration and Infection Prevention



## What you can do with the BenQ Interactive Flat Panel



### ClassroomCare



**Air Quality Sensor**  
monitors CO<sub>2</sub> and PM2.5 levels, plus temperature and humidity



**Germ-Resistant Screen**  
TÜV and SIAA-certified nano-ionic silver coating to kill bacteria



**Smart Eye-Care Solution**  
protects eyes with from flicker-free, low blue light and anti-glare efficacy

### Collaboration



**EZWrite Whiteboarding**  
for in-class interactive lessons



**Cloud Whiteboard**  
for online collaborations across multiple devices



**Collaboration Tools**  
for enhanced interaction and group learning

### 3rd Party Software



**Kahoot!**  
Create polls, learning games, and team competitions on the panel



**Mythware Classroom Management Software**  
Allows the teacher to control and manage the class in optimal conditions while the students learn, collaborate and communicate individually with the teacher or in groups.



**MozaBook**  
Expands teachers' teaching tools with versatile illustration, animation and interesting presentation possibilities.

### Distance Learning



**EZWrite Live**  
online Whiteboarding for distance and rural learning

### Wireless Presentation



**InstaShare App**  
for two-way wireless casting, mirroring and annotating content between the display and multiple devices

### Cloud Management



**Account Management System (AMS)**  
to manage user accounts and teaching materials



**Device Management System (DMS)**  
to remotely manage BenQ displays



**X-Sign Broadcast**  
to share school news, video and audio files across BenQ displays



## Monitor Environmental Parameters with the Air Quality Sensor

Poor classroom ventilation harms students' health and diminishes learning outcomes. Air Quality Sensors help measure PM 2.5, P10, CO2 and VOC concentration levels and display them on the interactive screen so teachers can intervene by opening windows or adjusting air conditioning.



Real-Time Environmental Indicator

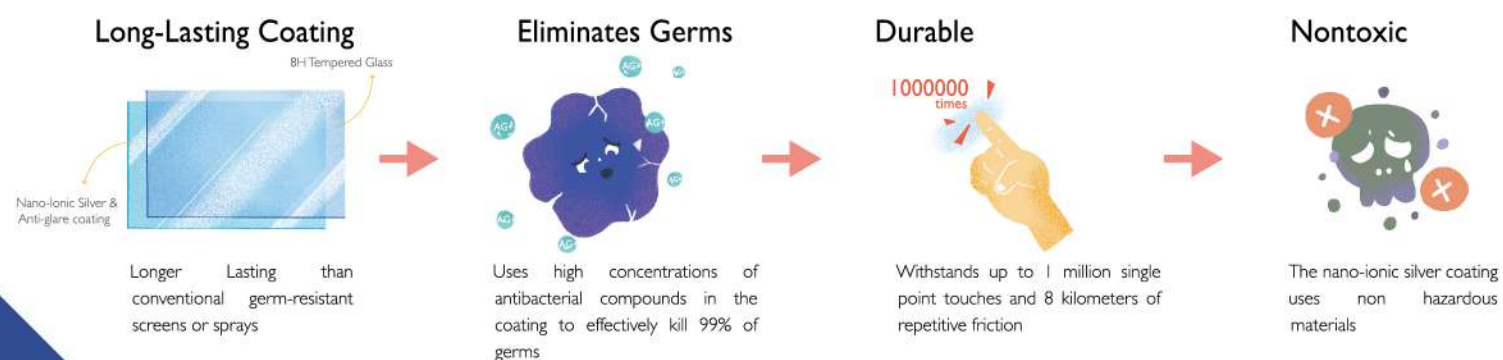
# ClassroomCare™ Technologies Provide Total Care in Classrooms

## Eliminate Germs with 3rd Generation Germ-Resistant Screens

The TÜV and SIAA certified germ-resistant screen uses higher concentrations of non-toxic nano-ionic silver compounds, and is cured together with anti-glare coating and tempered glass — giving the screen longer-lasting antibacterial properties and eliminating germs transmitted through sharing touch screens.



### The benefits of 3rd generation of germ-resistant screen



## Smart Eye-Care Protection

According to World Health Organization (WHO) statistics, at least 2.2 billion people worldwide have a vision impairment. The BenQ Interactive Flat Panel is designed to protect students and teachers from eye strain and eye fatigue caused from extended screen time.



### Flicker-free Screen

TÜV-certified anti-flicker technology protects students and teachers from digital eye strain.

### Blue Light Filter

TÜV-certified Low Blue Light technology reduces harmful effects of blue spectrum light. Plus, the built-in PIR (Passive Infrared) Motion Sensor detects when users are near the screen and turns on the Low Blue Light function automatically.

### Anti-reflection Glass Display

A reflective touchscreen combined with bright morning sun can make it hard for students to read on-screen lesson content. BenQ's anti-reflection glass makes pictures sharper and text more readable, even against reflecting light.



### Interactive Cooperation Tools for Fun Class Activities



**2D and 3D Shapes**  
Generates a full set of shapes for geometry lessons



**Ruler & Compass**  
Make math lessons visual and precise



**Document Camera Support**  
Project onto the EZWrite lag-free with any document camera



**Select at Random**  
Randomly select students to answer questions or participate in activities



**Team Posting**  
Up to 3 teams of students can participate and post their answers at the same time



**Score Board**  
A convenient tool for tallying game scores on-screen



**Timer & Stopwatch**  
Perfect for timed team games, presentations and group activities



**Calculator**  
Lets teachers do math quickly



**Geometry**  
Straighten and format roughly drawn shapes

# EZWrite Delivers Unlimited Collaboration

## Better Interactive Learning

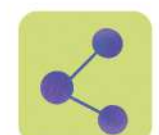
Compatible with IWB files, the EZWrite is designed for interactive lessons, improving brainstorming, illustrating ideas, taking notes and improving engagement between teachers and students.



### Tap and Teach



**IWB File Compatible**  
Create and edit .IWB files on any interactive display



**Data-to-Go**  
Class notes can be saved and shared directly via email, QRcode or a USB stick after the lesson is finished



**Video Recording**  
Teachers can record on-screen steps during their classes and use the recorded videos for class preparation or reviewing



**Expansive Canvas**  
A borderless canvas allows for expandable ideas



**Handwriting Recognition**  
Recognizes text, numbers and even drawings, and clearly places them on the whiteboard



**Palm Eraser**  
Easily erase writing and drawing with your hand

### Support One Another



**Dual Windows**  
Make lessons more efficient and interesting by running two apps side by side with a whiteboard on one side and supporting content on the other.



**Floating Tool**  
Utilise the Floating Tool to write and erase notes, record and capture on top of any app, image or video. Also compatible with Windows, Mac, or Chrome browsers when connecting with laptops or tablets.



## Endless Collaboration on the Cloud

With the built-in Cloud Whiteboard and Sticky Notes, teachers have the flexibility to take their lessons online, offering new ways to capture attention and collaborate with students.

## Make Learning Engaging

EZWrite Live is a web-based whiteboarding and video conferencing platform designed for remote learning. Compatible with Chrome, Firefox, and Safari browsers, it allows teachers to teach online, while students are in the classroom or at home.



### Cloud Whiteboard

Teachers and students can enjoy enhanced interactivity by using EZWrite Cloud Whiteboard to collect, categorize, edit, and share notes between the display and mobile devices.

### Create Interactive, Boundless Lessons



Users can access EZWrite Live from any device through a Chrome, Firefox or Safari browser.



Real-time annotation lets teachers and students interact in real time.



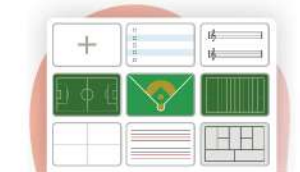
One-tap video recording lets students focus on the lesson without the distraction of note-taking.



Teachers can easily take control of the class by turning students' cloud whiteboards, editing-access on and off.



Teachers and students can switch among their existing whiteboard canvases depending on the lesson content.



Communicate better with built-in education focused templates.

### Online Sticky Notes

In Cloud Whiteboard, teachers and students can discuss and brainstorm using Sticky Notes, opening up endless possibilities for engagement and creativity.

### Board to Board

Create a shared cloud whiteboard on different BenQ IFPs simultaneously for group discussions.

## The Perfect Companion for Distance Learning

### Learning from Home



### Distance Education





## Flexible Team Collaboration

### Two-Way Touch Controls Your Content

Control the shared screen directly from the display or from your own devices.



### Multitask with Floating Windows

Open up another file in a floating window to back up your current content while teaching.



# Wirelessly Share Your Thoughts In One Click With InstaShare 2

## Share Content from any Device

### Wirelessly Present Using Any Platform

Screen share using Windows, macOS, iOS, Android, and Chrome OS devices without installing any apps or programs.

### Share Different Types of Content

Switch between casting your entire screen and sharing specific files.



### Nine Split Screens for Synchronized Discussions

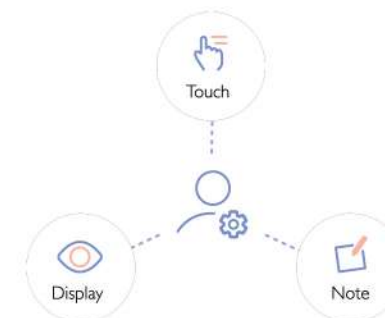
Allows up to nine devices at once for synchronised sharing.



## In-Class Sharing Permission Control

### Control from the Display

Control which and how many devices are mirrored, who can annotate, and which screen sharing mode is used.



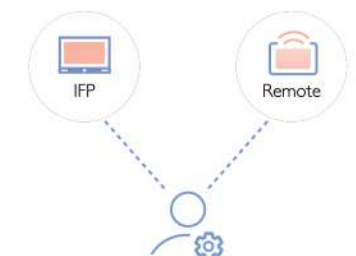
### Do Not Disturb Mode

Enable "Do Not Disturb Mode" to ensure students focus on the current screen by blocking incoming screen sharing requests.



### Remote Host Controls

Meeting controls are also on the host's device, giving you the flexibility to manage the session from your seat.





## Connect Your Account and Teaching Materials with the Account Management System

### For Teachers

#### Access Class Material from Different Classrooms

BenQ AMS can connect with Google Drive, OneDrive, Dropbox and Network Folder, allowing teachers to import class materials to EZWrite or open supporting files through AMS in any classroom without having to enter account information again.



#### Smart Login to Your Personalized Settings Anywhere on the Campus

Designed to simplify the login process, teachers can either scan a QR code to log in to their personalised IFP environment using a smartphone or tablet (for both IFP and Smart Projector), or tap the NFC sensor to activate (IFP only) – just like your PC.



### For IT Staff

#### Efficient Account Management

AMS provides a clear and intuitive user interface for IT managers to remotely manage multiple user accounts — a traditionally time consuming task.



# Hassle-free Cloud Display Management

## Manage Displays on the Cloud with the Device Management System



### Device Info and Management

Remotely control your displays with DMS Cloud with the Internet, lowering your operation's TCO and energy consumption.



### Apps Management

DMS Cloud saves you from repetitive manual installations

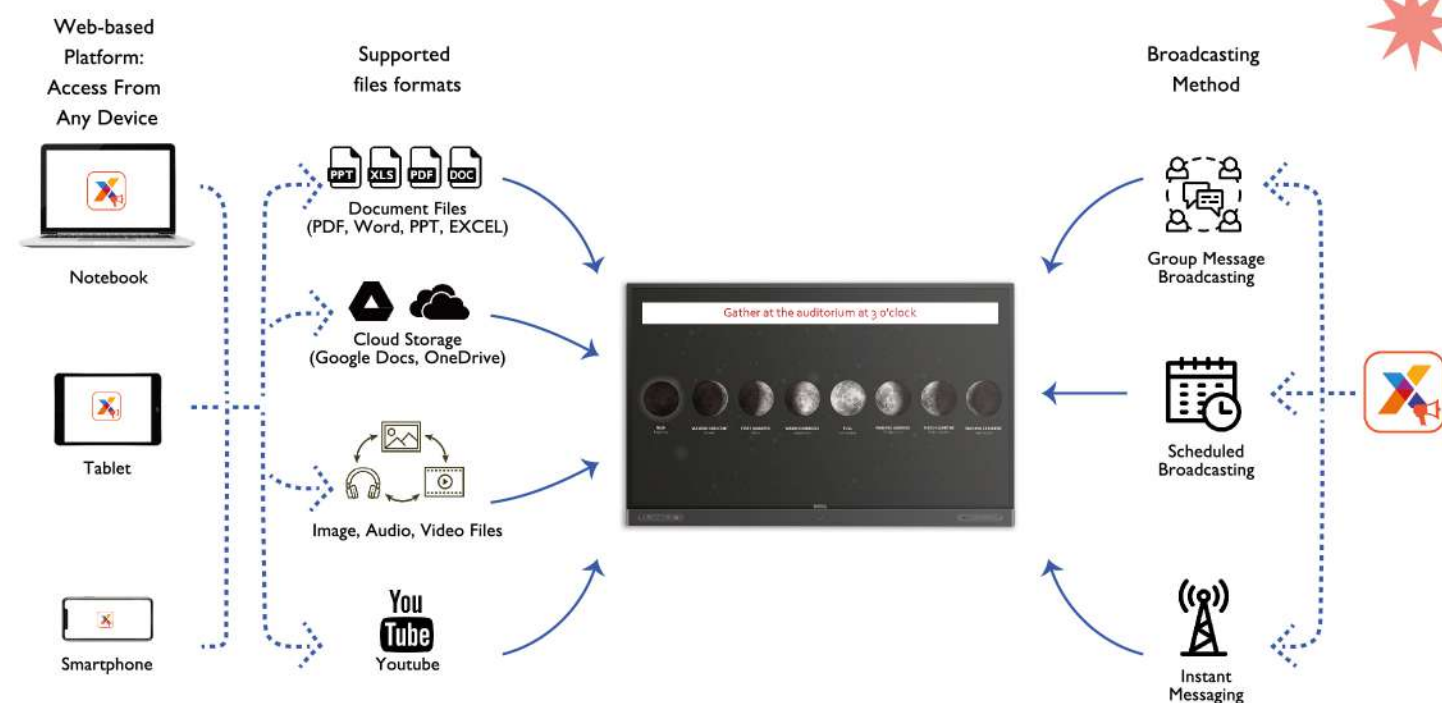


### OTA (Over-the-Air) Update

Upgrade the latest BenQ firmware for your displays through OTA update support and keep them running smoothly.

## Empower Your Broadcasting System With X-Sign Broadcast

Designed to simplify the broadcasting process across different classrooms, X-Sign Broadcast can schedule to broadcast school messages, classroom material, and video and audio files to all or dedicated Interactive Flat Panels using any laptop, tablet or smartphone.





# Designed to Foster Learning

The Interactive Flat Panel is designed to facilitate the teaching process, ensuring that teachers can teach without interruption.

9H Tempered Glass with Germ-Resistant Coating  
for extreme durability



**Air Quality Information**  
Monitors CO<sub>2</sub>, PM2.5 and PM 10 Levels, plus temperature and humidity

**Quick shortcuts**  
Use shortcuts to start EZWrite Whiteboard, wireless projection via InstaShare and manage files on the Account Management System (AMS)

**Slot-In-PC**  
Adds the ability to run Windows OS on the panel

**PIR Motion Sensor (Short Range)**  
Activates Eye-Care

**Multiple Connection Ports**  
Includes HDMI, USB Type-C, USB 3.0, and USB 2.0 ports

**NFC Sensor**  
Instantly activates personal accounts and the EZWrite whiteboard with the tap of the NFC Pen

**PIR Motion Sensor (Long Range)**  
For auto screen wakeup and auto sleep mode

**47W Speaker Subwoofers and Equalizer**  
Offers the best sound settings to suit the size of classrooms and lessons

**Function Buttons**

**Wi-Fi Dongle**  
For Wi-Fi connection

**Sync with the files**  
Sync files stored on your Google Drive, Dropbox, OneDrive and local network



**Smart Remote Control**  
Acts as a pointer and voice assistant



# Gapless Writing Feels Like Using a Real Pen

Featuring advanced touch technologies, Zero Bonding and Fine IR Plus, the BenQ RP Series provides real-time and accurate writing and drawing feedback just like the natural feeling of writing. Express your ideas easily, quickly and consistently.

## Zero Bonding Technology

Ensures a natural and accurate writing and drawing experience by reducing the gap between the touch point and the point displayed on screen.



## Boost Creative Education

Thanks to Zero Bonding Technology and Fine IR Plus technologies, users can simultaneously write in different colours and paint at the stroke of a brush, increasing engagement with students.



### Dual Pens

Ideal for group discussions or answering questions during class lessons, Dual Pen allows users to write simultaneously in different colors.



### Brush Mode

Works with any brush for limitless, painting and drawing. built-in Brush Mode is ideal for inspired creativity in art classes.

# Success Stories

“It’s so much more fun, engaging, and spontaneous. Having access to an interactive panel has certainly changed the way that I deliver the curriculum.”

*Kayla Kuhnemann, Prep Teacher from Coomera Anglican College*



Al Andalus International School,  
Saudi Arabia



Coomera Anglican College,  
Australia



Aoba International School,  
Japan



Saint Ursula Catholic School  
Indonesia



Parishkar World, India



WHYKids, Korea

Let us take you on a journey of digital transformation and building smart classrooms.



Scan to read more success stories