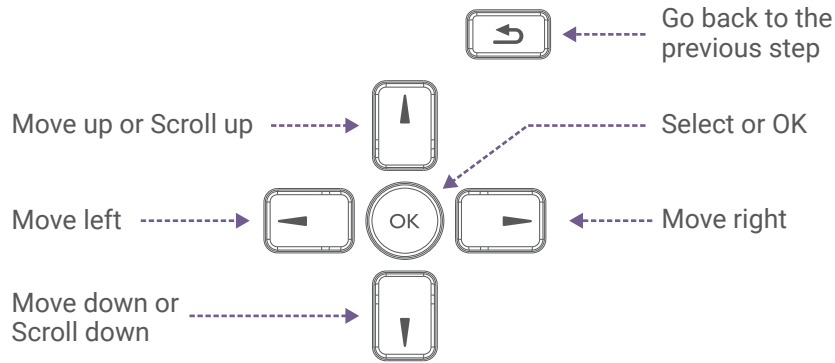


# Setup



BenQ recommends using a mouse for faster setup. If you are using the remote control, use the following buttons:



1. Power on your BenQ signage.
2. On the **Hi there** page, select a language, and then press **Start**.  
 **Tip:** Your selection on this screen is not highlighted. Press or twice to select either the language or **Start**.
3. On the **Connect to Wi-Fi** page, press **Set up offline** then **Continue**.
4. On the **Date & time** page, set the date and time, and then press **Next**.
5. On the **Copy apps & data** page, press **Don't copy** then **Skip**.
6. On the **Google services** page, review the permissions, and then press **Accept**.
7. On the **Set a PIN** page, press **Skip** then **Skip anyway**.
8. On the **End-User License Agreement (EULA)** page, read and accept the agreement, and then press **Next**.
9. On the **Privacy Policy** page, read and agree to the terms, and then press **Next**.
10. On the **BenQ services** page, toggle on **Enable BenQ services**, and then press **Next**.

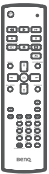
Scan the QR code to access the setup instructions in other languages:



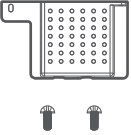
# Package contents



Digital signage



Remote control



Wi-Fi slot cover  
Screws × 2



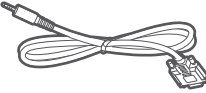
Signage documents



Power cord\*



HDMI cable



RS-232 cable

\*The power cord type is dependent on your region.

# Support



<https://support.benq.com>



Online manual



Contact sales form



How-to video

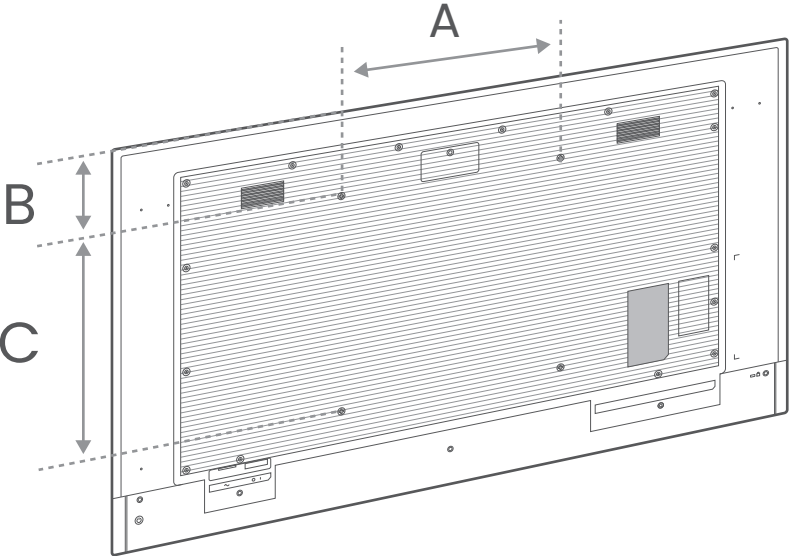


# Digital Signage Quick Start Guide

Digital Signage  
SL4304, SL5504, SL6504, SL7504, SL8604,  
SH5504, SH6504, SH7504

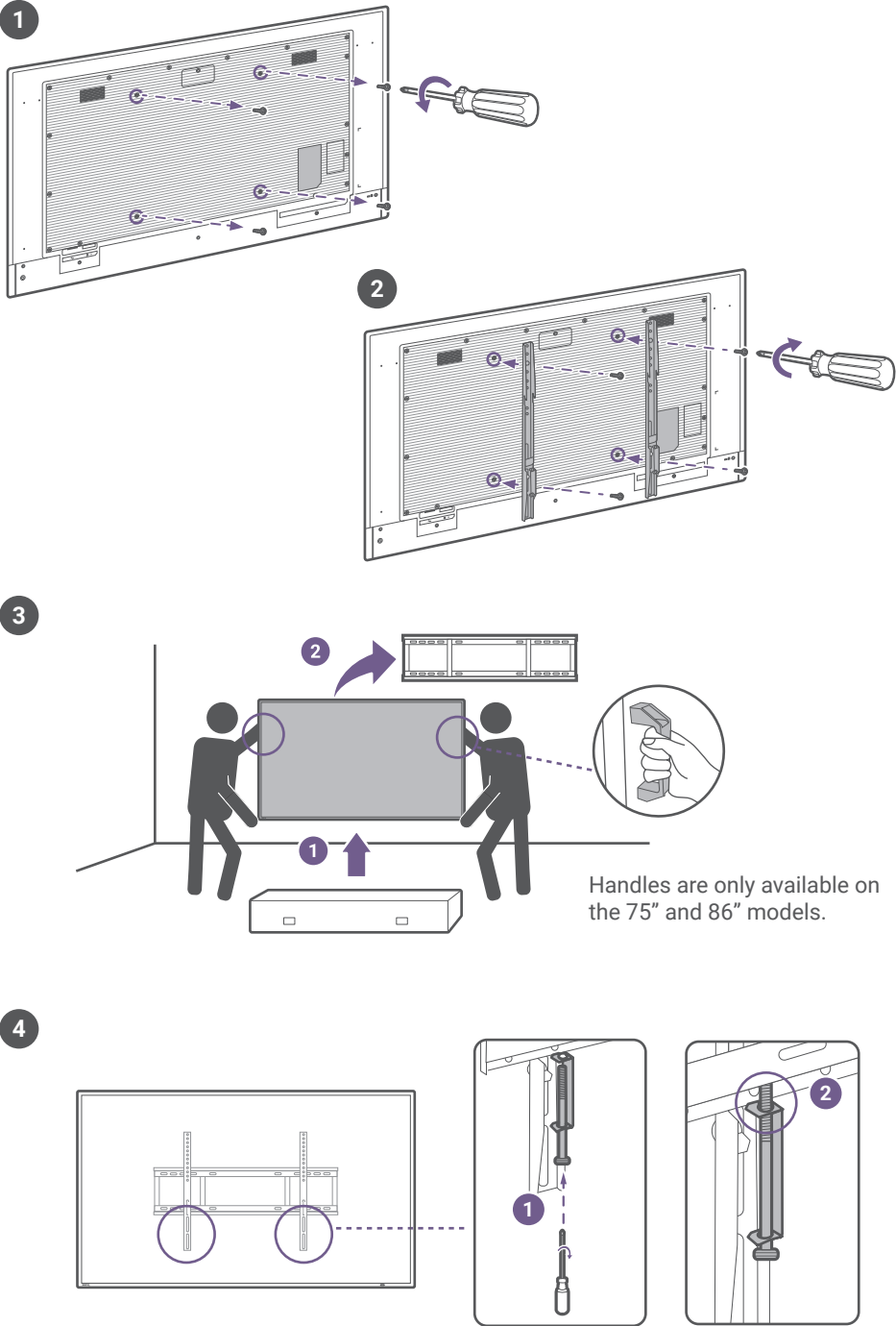


Mounting

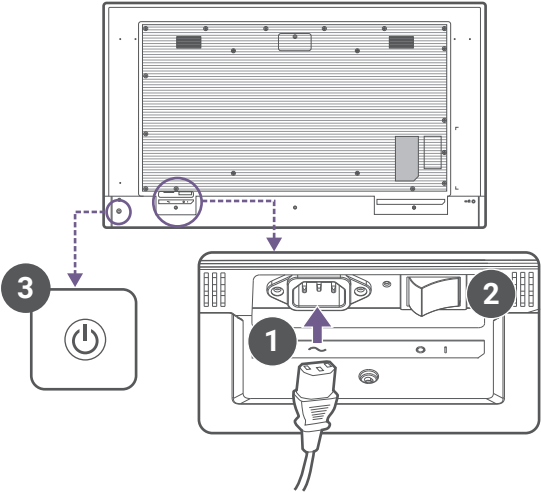


	43"	55"	65"	75"	86"
A	200 mm	400 mm	400 mm	600 mm	600 mm
B	188.7 mm	154 mm	230.4 mm	279 mm	352 mm
C	200 mm	400 mm	400 mm	400 mm	600 mm
Screw size	M6 × 12L		M8 × 16L		

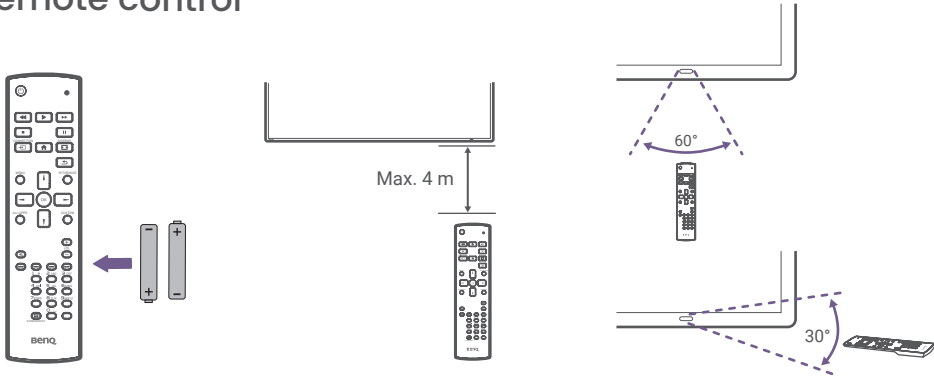
The wall mount is not included and must be purchased separately.



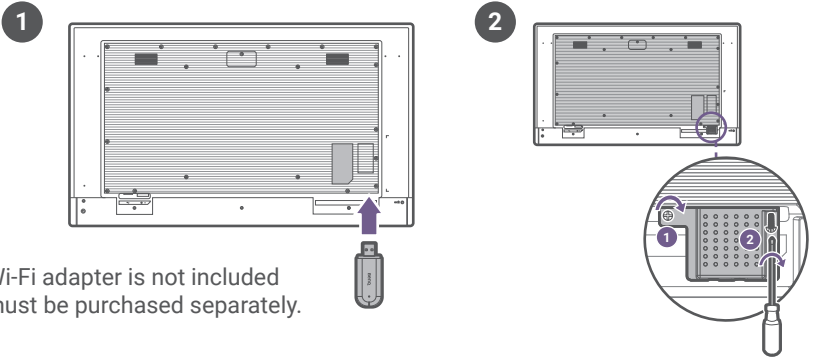
Power



Remote control



Wi-Fi adapter



The Wi-Fi adapter is not included and must be purchased separately.