

Premium Education Solution

BenQ Board Pro RP05 Interactive Display

BenQ's most advanced board. Intuitive for teachers, effortless and secure for IT.



BenQ Education
Shape the Future of Learning

BenQ Board Pro
RP6505/RP7505/RP8605



Google EDLA Certified



Built-in AI Features



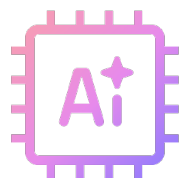
Eyesafe 3.0

Advanced hardware meets intelligent software



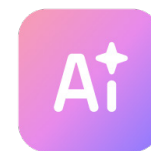
Google EDLA Certified

Google Play support



10 TOPS NPU

Industry-leading AI



Built-in AI features

Do-it-all teaching assistant



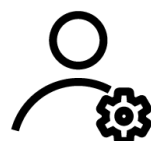
Eyesafe 3.0

Max blue light protection



70W sound system

Powerful, crisp audio



Directory sync

Auto account setup



Multi-user login

QR Code and NFC



Android 15

Future upgradeable

For IT efficiency and classroom ease

Less hassle for IT, secure logins for teachers. No manual account setup needed with directory sync. Import users from ClassLink, Clever, Google, Microsoft, and other identity providers and manage with ease.



Deploy, manage, and protect. Your way

Unify device, app, and account management to reduce IT admin workload. Easily onboard displays, manage devices anywhere, and monitor usage status.



Personal, secure workspace on every display

Supporting single sign-on, NFC, or QR code login, teachers can securely access their personalized workspace, complete with app shortcuts, wallpapers, and cloud storage on any BenQ display.

Effective, user-friendly AI



Engage, captivate, and inspire

Designed for teachers, powered by AI. Simple to use and ready to transform learning.



Ask AI

Get answers on the spot



Lasso Search

Circle, search, discover



EZMath

Neat, legible formulas and shapes

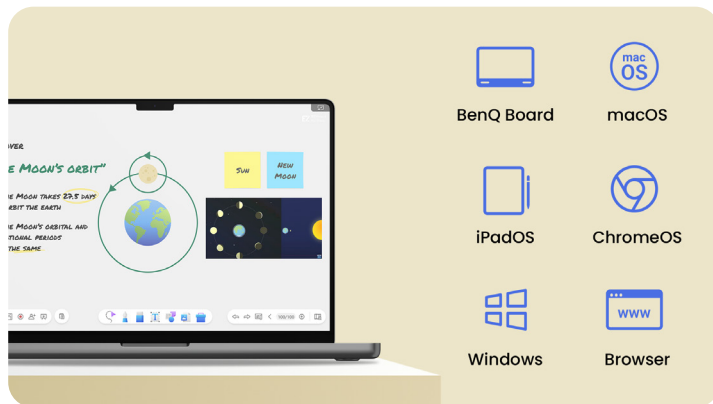


Circle to Artify

From notes and sketches to art

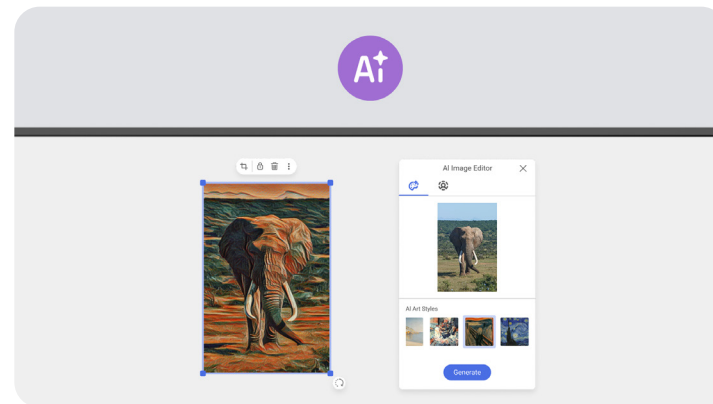
EZWrite 6: Beyond a whiteboard

Empowering teachers through every step, from lesson planning and classroom interaction to post-class review.



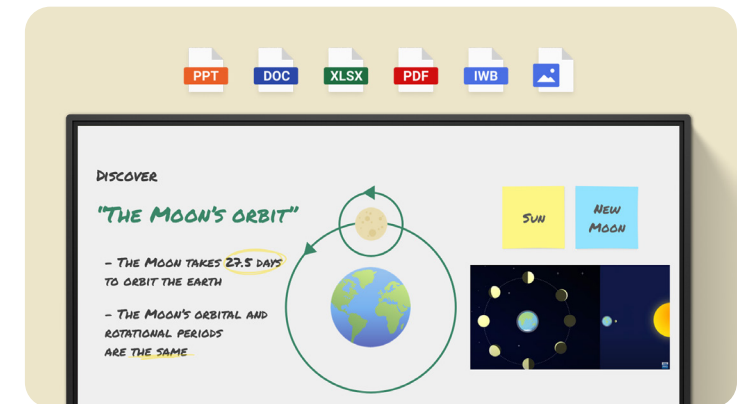
Create lessons anywhere

Prepare lessons using preferred platforms. EZWrite 6 works across laptops and mobile devices, supporting Windows, macOS, Android, and browsers.



Versatile teaching tool

Go beyond writing and sketching. Expand the whiteboard, split sections for group work, improve equation readability, and elevate visuals with AI-powered Background Remover and Art Style Transfer features.



Import, edit, and share

Easily incorporate content with support for diverse file formats, including Office files, PDFs, MP4s, and more. Add notes during class and save the session as an editable file or export it as a handout for review.

InstaShare 2: Wireless screen sharing

No cables, no adaptors, no setup delays. Walk in and transform lessons into shared experiences.



Improve lesson flow

The touchback feature lets teachers control their laptops directly from the board, eliminating the need to move back and forth during class. Less interruptions, more student focus.



The future of classroom interaction

Cast up to nine screens to foster a collaborative space where every student is inspired to share ideas. Teachers maintain control over which devices are mirrored and how many, who can annotate, and which screen-sharing mode is used.



Smooth casting from any device

Compatible with Windows, Android, ChromeOS, macOS, iOS, and iPadOS for a consistent experience across devices. Supports native protocols like AirPlay, Google Cast, and Miracast for effortless screen casting.

No two classrooms are the same

Every student and teaching environment is unique. The RP05 delivers the versatility you need to foster learning in any classrooms.



Scrolling ink

Ink moves with the pages as you scroll in Note Browser



Ink freely

Add notes and highlight on top of any app, document, or screen



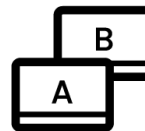
Side-by-side drag and drop

Easily move content from different apps



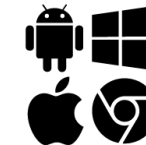
Go big

Display-to-projector mirroring for larger environments



Double your workspace

More space with screen extension



Max compatibility

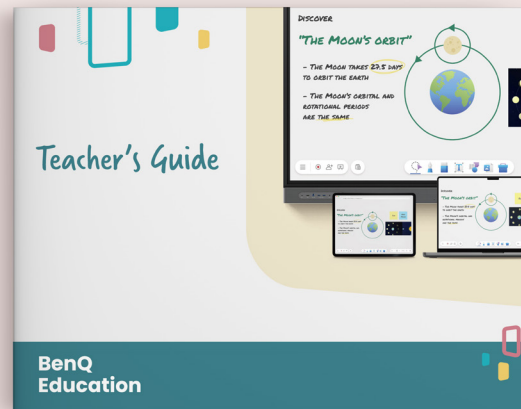
Support Android, Windows, MacOS, ChromeOS, and more

Effortless to adopt

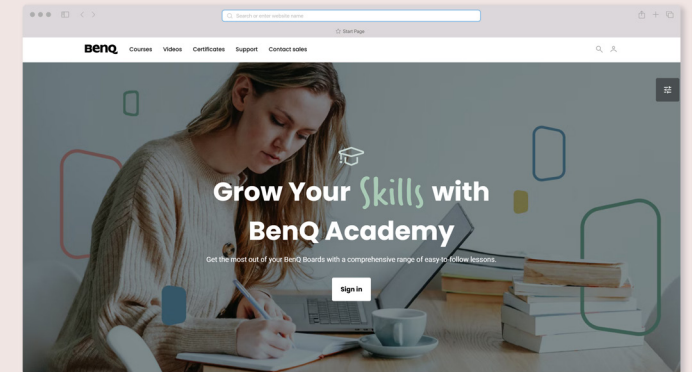
BenQ Boards are designed for easy adoption. Teachers and IT teams can also access a variety of resources to learn how to make the most of our interactive displays.



Onboarding guides



Teacher's guides



BenQ Academy

Attendance builds achievement

BenQ ClassroomCare® offers numerous protective features to ensure a safe environment for learning interactions.



Student health comes first



Eyesafe 3.0

Highest level of blue light protection



Circadian optimization

Supports healthy sleep



Germ-resistant

Effective against 99.9% of common germs



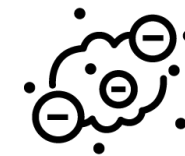
Anti-glare, flicker-free

Reduced eye strain, improved visuals



Air quality monitoring

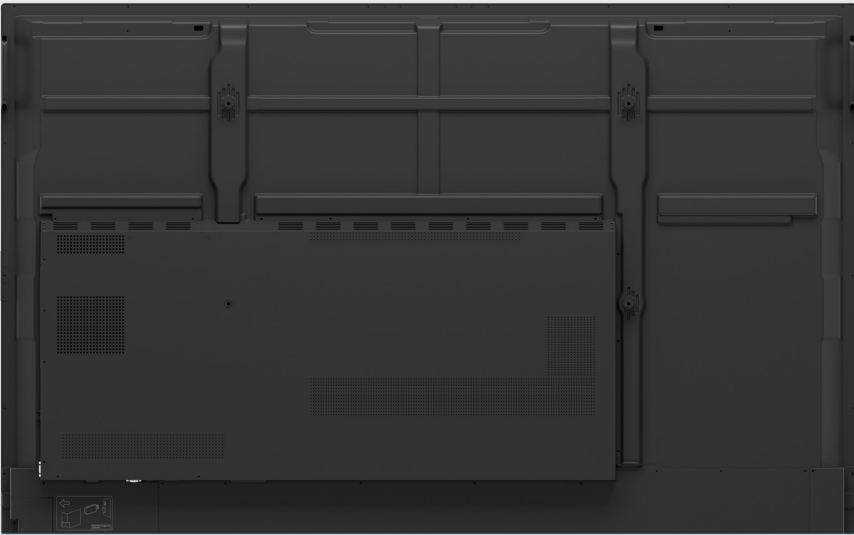
Track CO₂, PM_{2.5}, and TVOC in real time



Built-in ionizer

Regulate air impurities

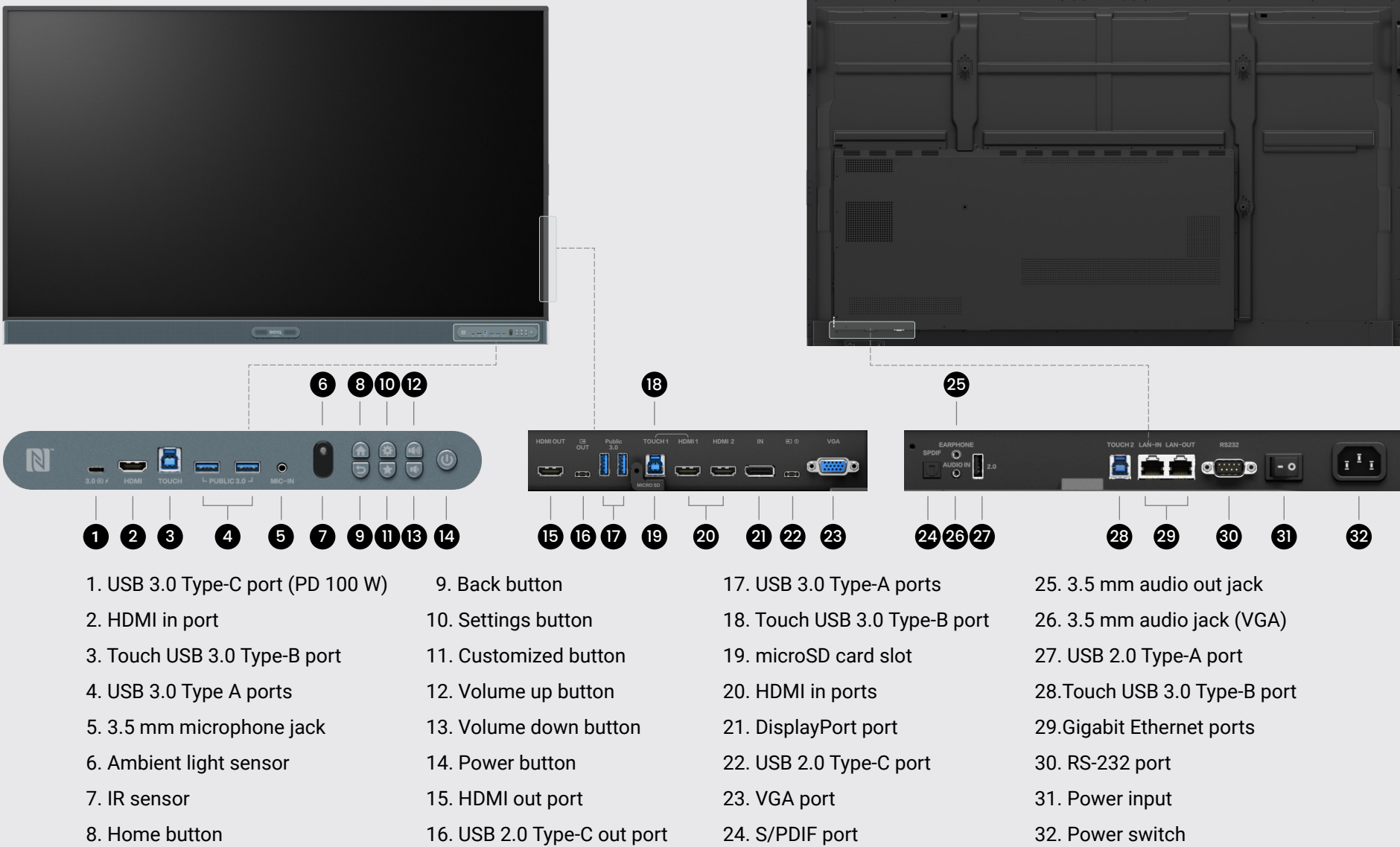
RP05 device specifications



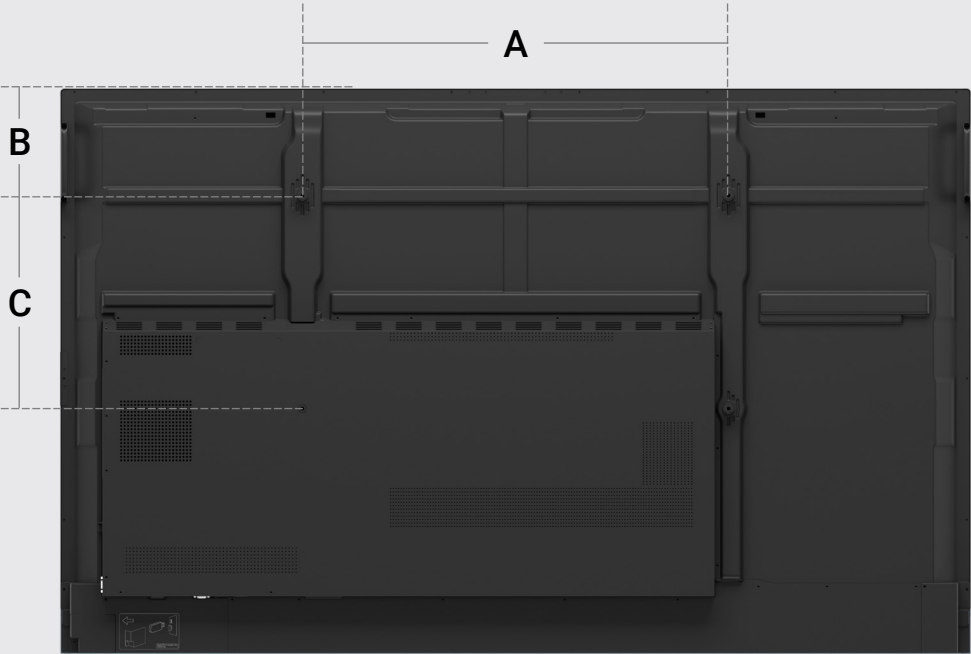
Dimensions (W × H × D)

- RP6505 | 58.6 × 36.9 × 5.1 in (1488.4 × 937.3 × 130.0 mm)
- RP7505 | 67.3 × 41.8 × 5.1 in (1709.4 × 1060.8 × 130.0 mm)
- RP8605 | 77.0 × 47.3 × 5.1 in (1957.0 × 1200.6 × 130.0 mm)

RP05 device specifications



VESA specifications



Dimension	65"	75"	86"
A	23.6 in (600 mm)	31.5 in (800 mm)	31.5 in (800 mm)
B	8.7 in (221.7 mm)	7.9 in (200.8 mm)	11.4 in (288.7 mm)
C	15.7 in (400 mm)	15.7 in (400 mm)	23.6 in (600 mm)

Model	RP6505	RP7505	RP8605
Display			
Screen size	65"	75"	86"
Panel type	IPS	IPS	IPS
Resolution	4K UHD 3840 × 2160 pixels	4K UHD 3840 × 2160 pixels	4K UHD 3840 × 2160 pixels
Active area	56.2 × 31.6 inch (1428.5 × 803.5 mm)	64.9 × 36.5 inch (1650.2 × 928.2 mm)	74.4 × 42.0 inch (1895.0 × 1066.0 mm)
Aspect ratio	16:9	16:9	16:9
Panel brightness (typical)	450 nits	450 nits	450 nits
Color depth	10-bit	10-bit	10-bit
Color gamut	72% NTSC	72% NTSC	72% NTSC
Contrast ratio (typical)	1500:1	1500:1	1200:1
Dynamic contrast ratio	50,000:1	50,000:1	50,000:1
Response time	8 ms	8 ms	8 ms
Flicker-free	Yes	Yes	Yes
Low blue light	Eyesafe 3.0	Eyesafe 3.0	Eyesafe 3.0
Anti-glare	Yes	Yes	Yes
Germ-resistant technology	Nano-ionic silver	Nano-ionic silver	Nano-ionic silver
Hardness	9H tempered	9H tempered	9H tempered
Backlight life (typical)	50,000 hrs	50,000 hrs	50,000 hrs
Touch technology			
Touch points	Up to 50	Up to 50	Up to 50
Touch response time	< 2.5 ms	< 2.5 ms	< 2.5 ms
Touch technology	Ultra Precision IR	Ultra Precision IR	Ultra Precision IR

System			
CPU	Arm Cortex-A78 × 2 + A55 × 6	Arm Cortex-A78 × 2 + A55 × 6	Arm Cortex-A78 × 2 + A55 × 6
NPU	10 TOPS	10 TOPS	10 TOPS
GPU	Arm Mali-G57 MC2	Arm Mali-G57 MC2	Arm Mali-G57 MC2
Memory Storage	16 GB 256 GB	16 GB 256 GB	16 GB 256 GB
Operating system	Android 15 (EDLA)	Android 15 (EDLA)	Android 15 (EDLA)
Connectivity			
USB-C	1 × USB 3.0 (full-featured PD 100W) 1 × USB 2.0	1 × USB 3.0 (full-featured PD 100W) 1 × USB 2.0	1 × USB 3.0 (full-featured PD 100W) 1 × USB 2.0
USB-C out	1 × USB 2.0 (data, video out, audio out, touch)	1 × USB 2.0 (data, video out, audio out, touch)	1 × USB 2.0 (data, video out, audio out, touch)
USB-A	4 × USB 3.0 3 × USB 2.0	4 × USB 3.0 3 × USB 2.0	4 × USB 3.0 3 × USB 2.0
USB-B (touch)	3 × USB 3.0	3 × USB 3.0	3 × USB 3.0
HDMI (in out)	3 × HDMI 2.0 1 × HDMI 2.0	3 × HDMI 2.0 1 × HDMI 2.0	3 × HDMI 2.0 1 × HDMI 2.0
DisplayPort	1 × DisplayPort 1.2a	1 × DisplayPort 1.2a	1 × DisplayPort 1.2a
VGA	1	1	1
Audio in	1 × 3.5 mm microphone jack 1 × 3.5 mm audio jack (VGA)	1 × 3.5 mm microphone jack 1 × 3.5 mm audio jack (VGA)	1 × 3.5 mm microphone jack 1 × 3.5 mm audio jack (VGA)
Audio out	1 × earphone jack	1 × earphone jack	1 × earphone jack
S/PDIF out	1 (optical)	1 (optical)	1 (optical)
Ethernet	2 × Gigabit (Android)	2 × Gigabit (Android)	2 × Gigabit (Android)
Wi-Fi	Wi-Fi 6	Wi-Fi 6	Wi-Fi 6
Bluetooth®	Bluetooth 5.2	Bluetooth 5.2	Bluetooth 5.2
OPS slot (for slot-in PC)	1	1	1
microSD reader	1	1	1
RS-232	1	1	1

Built-in peripherals			
Soundbar	70W (2 × 25W speakers 1 × 20W subwoofer)	70W (2 × 25W speakers 1 × 20W subwoofer)	70W (2 × 25W speakers 1 × 20W subwoofer)
Microphone	8-microphone array (up to 39 ft 12 m)	8-microphone array (range: up to 39 ft 12 m)	8-microphone array (range: up to 39 ft 12 m)
NFC sensor	Yes	Yes	Yes
Air ionizer	Yes	Yes	Yes
Air quality sensor	CO ₂ , PM _{2.5} , PM ₁₀ , TVOC, CH ₂ O, temperature, humidity	CO ₂ , PM _{2.5} , PM ₁₀ , TVOC, CH ₂ O, temperature, humidity	CO ₂ , PM _{2.5} , PM ₁₀ , TVOC, CH ₂ O, temperature, humidity
Ambient light sensor	Yes	Yes	Yes
IR sensor	Yes	Yes	Yes
Software			
Whiteboarding	EZWrite 6	EZWrite 6	EZWrite 6
Wireless screen sharing	InstaShare 2	InstaShare 2	InstaShare 2
Account management	AMS	AMS	AMS
Device management	DMS	DMS	DMS
Broadcast system	X-Sign Broadcast	X-Sign Broadcast	X-Sign Broadcast
Quick access tool	Floating Tool	Floating Tool	Floating Tool
Power			
ENERGY STAR®	Yes	Yes	Yes
Power	AC 100-240V 50/60 Hz	AC 100-240V 50/60 Hz	AC 100-240V 50/60 Hz
Standby power consumption	< 0.5W	< 0.5W	< 0.5W
Typical power consumption	77.4W	91.1W	126.4W
Accessories			
Cables	1 × HDMI (9.8 ft 3 m), 1 × USB-B touch (9.8 ft 3 m), 1 × USB-C (4.9 ft 1.5 m)	1 × HDMI (9.8 ft 3 m), 1 × USB-B touch (9.8 ft 3 m), 1 × USB-C (4.9 ft 1.5 m)	1 × HDMI (9.8 ft 3 m), 1 × USB-B touch (9.8 ft 3 m), 1 × USB-C (4.9 ft 1.5 m)
Wall mount	Preinstalled	Preinstalled	Preinstalled
Pens	2	2	2
Remote control	1	1	1

Physical			
Dimensions (W × H × D)	58.6 × 36.9 × 5.1 inch (1488.4 × 937.3 × 130.0 mm)	67.3 × 41.8 × 5.1 inch (1709.4 × 1060.8 × 130.0 mm)	77.0 × 47.3 × 5.1 inch (1957.0 × 1200.6 × 130.0 mm)
Shipping dimensions (W × H × D)	64.1 × 40.3 × 8.2 inch (1628.0 × 1024.0 × 208.0 mm)	73.3 × 46.1 × 8.1 inch (1863.0 × 1170.0 × 205.0 mm)	83.1 × 51.7 × 8.1 inch (2110.0 × 1314.0 × 205.0 mm)
Weight (product shipping)	76.1 lbs 98.1 lbs (34.5 kg 44.5 kg)	99.4 lbs 128.3 lbs (45.1 kg 58.2 kg)	121.3 lbs 162.3 lbs (55 kg 73.6 kg)
Mount interface Screws	VESA 600 × 400 mm 4 × M8 × 25L	VESA 800 × 400 mm 4 × M8 × 25L	VESA 800 × 600 mm 4 × M8 × 25L
Pen tray	Yes	Yes	Yes
Environment			
Operating humidity	10% - 90% RH non-condensing	10% - 90% RH non-condensing	10% - 90% RH non-condensing
Operating temperature	32°F - 104°F 0°C - 40°C	32°F - 104°F 0°C - 40°C	32°F - 104°F 0°C - 40°C
Storage humidity	10% - 90% RH non-condensing	10% - 90% RH non-condensing	10% - 90% RH non-condensing
Storage temperature	-4°F - 140°F -20°C - 60°C	-4°F - 140°F -20°C - 60°C	-4°F - 140°F -20°C - 60°C



Dealer's Stamp