



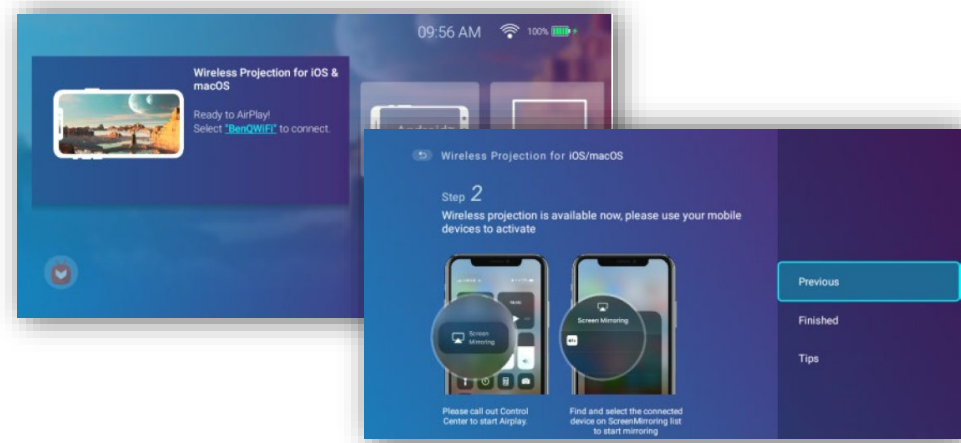
Because it matters

# BenQ GVI Quick How-To's & FAQs

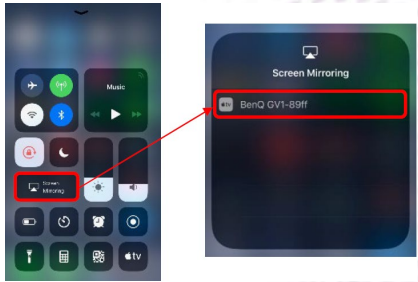


# If you have iOS / macOS

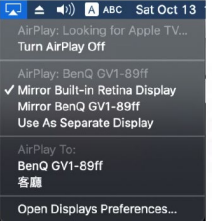
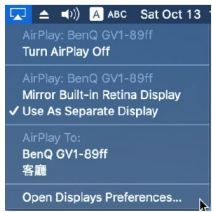
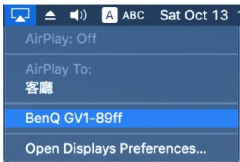
- 1. Make sure iOS / macOS device is connected to the same Wi-Fi
- 2. Click “Wireless Projection for iOS / macOS” on the GVI



- 3. On iOS, go to Control Center → Screen Mirroring



- 4. On macOS, go to the AirPlay status bar

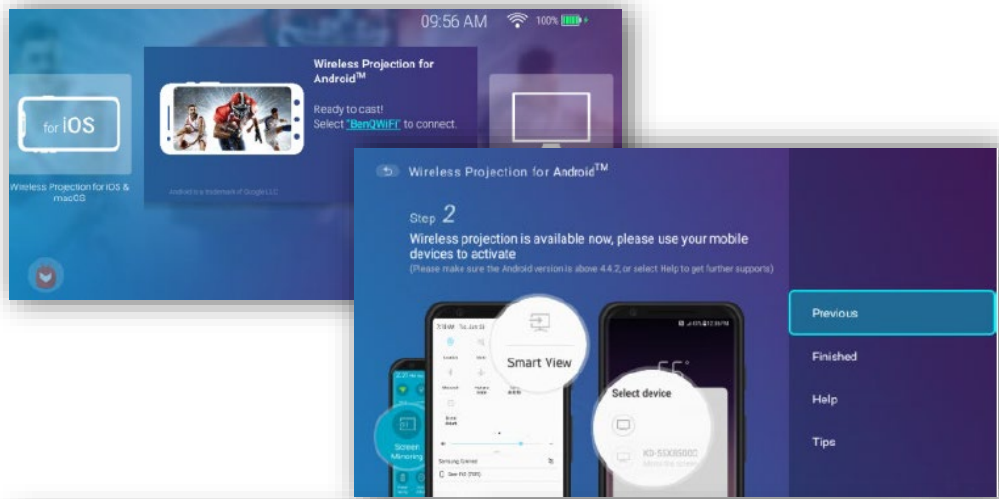


\*Please note **wireless** streaming such as Google Play, Hulu, Netflix, & Amazon Prime are not available through on **iOS / Android devices**.

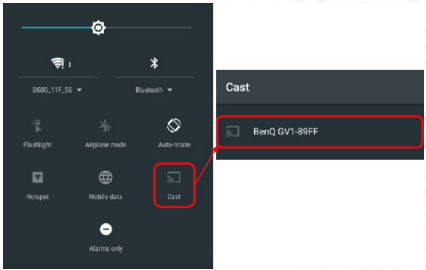


# If you have Android

- 1. Make sure Android device is connected to the same Wi-Fi
- 2. Click “Wireless Projection for Android” on the GVI



- 3. Look for the casting function on your Android device

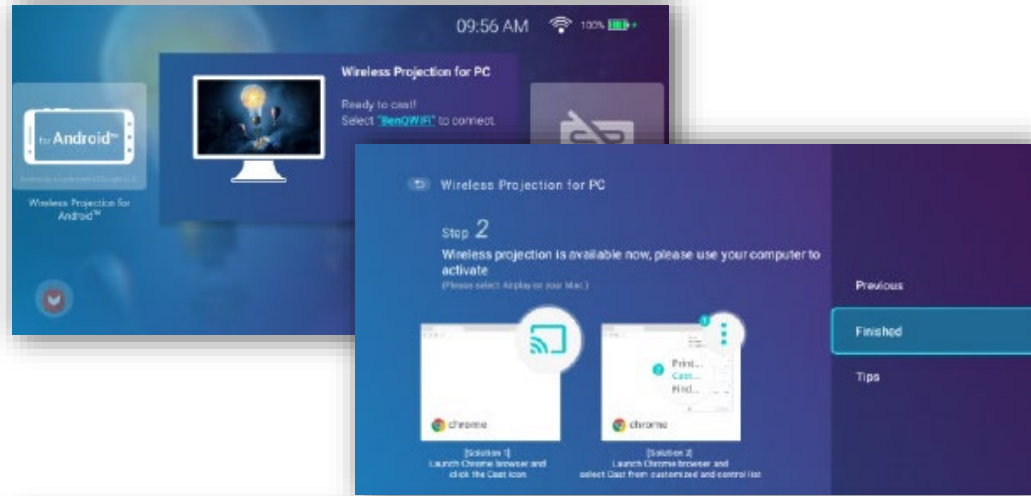


**\*Please note wireless streaming such as Google Play, Hulu, Netflix, & Amazon Prime are not available on iOS / Android devices.**

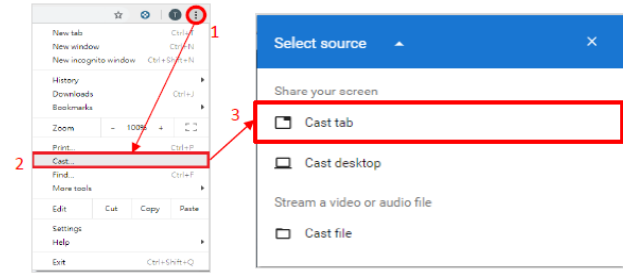


# If you have PC

1. Make sure PC / laptop device is connected to the same Wi-Fi & has the Google Chrome browser
2. Click “Wireless Projection for PC” on the GVI



3. Find the “Cast” button on your Chrome browser.



**\*Wireless** streaming such as Google Play, Hulu, Netflix, & Amazon Prime are available through Google Cast



# FAQ



## How do I watch Netflix on GVI?

There are a few ways you can watch Netflix:

1. Download the Netflix app from the Aptoide TV app store.
2. Watch wirelessly through AirPlay on macOS, Google Cast on Chrome browser (wireless streaming is not available on iOS on Android).
3. Use the included USB-C cable from your laptop or Android devices.

## What other contents are available to watch with the GVI?

	YouTube	Netflix	iTunes Movie	Google Movie	Amazon Prime
AirPlay on iOS	○	×	×	×	×
AirPlay on macOS	○	○	○	○	×
Google Cast on Android mobile devices	○	×	×	×	×
Google Cast by Google Chrome Browser on PC or Laptop	○	○	○	○	×
USB-C DP from Android mobile devices	○	○	×	○	○

# FAQ



## **Why is the GVI not projecting the screen from my phone or laptop via USB-C cable?**

In order to project via the USB-C cable, please make sure that your devices are equipped with DisplayPort (1.1 or above) technology. Some devices may have a USB-C port but not DisplayPort technology.

## **Can I use HDMI to USB-C adapter to connect my laptop and GVI?**

No, currently this not possible yet as 99% of HDMI to USB-C adapters support USB-C output to HDMI input, while GVI's USB-C port is for source input.

## **Can I connect my Bluetooth speaker or headphone to GVI?**

Yes, you can connect both GVI and your Bluetooth speaker or headphones when GVI is in Projector mode. Refer to page 25 of the reviewer's guide for step-by-step instructions.

## **Can I connect my USB-A Storage to GVI?**

Yes, you can use USB A to USB-C adapter to connect your USB A Storage to GVI when it's in Projector mode.

## **How bright is the GVI when in the battery mode?**

When the power adapter is unplugged or when the light mode is set to battery mode manually, the brightness will dim to 60 lm to support 3 hours play.



Because it matters