

Top Education Display Scenarios

74% of teachers say educational technology is a student motivator

59% of schools have interactive whiteboards available in the classroom

Source: PBS Learning Media



How can I select the best display solutions for my school?

Schools make use of different spaces or rooms for different purposes. You will need to determine the specific purpose of the display for the space as well as calculate the distance between the furthest person in the room to the display.



INTERACTIVE CLASSROOM

Providing students with immersive learning experience via short throw projectors, ultra short throw projectors, and interactive flat panels.

- Interactive Classroom Projectors : Short Throw and Ultra Short Throw Projector
- Interactive Flat Panel : 65", 70", 75", 86" RP Series
- Smart Signage: 65", 75", 86" ST Series
- Wireless Presentation System: InstaShow & InstaQShare



MULTIMEDIA CLASSROOM

Ultra-accurate 4K HDR BlueCore laser projectors and 4K Interactive Flat Panels are the keys to viewing artwork or design in fine detail, or high resolution images/ videos in vivid color and superb clarity.

- 4K HDR Installation Laser Projector
- Interactive Flat Panel : 65", 70", 75", 86" RP Series
- Smart Signage: 65", 75", 86" ST Series
- Wireless Presentation System: InstaShow & InstaQShare



PROFESSIONAL LAB & RESEARCH OFFICE

Facilitates a collaborative learning experience via Projectors or multi-touch and annotation-enabled Interactive Flat Panels.

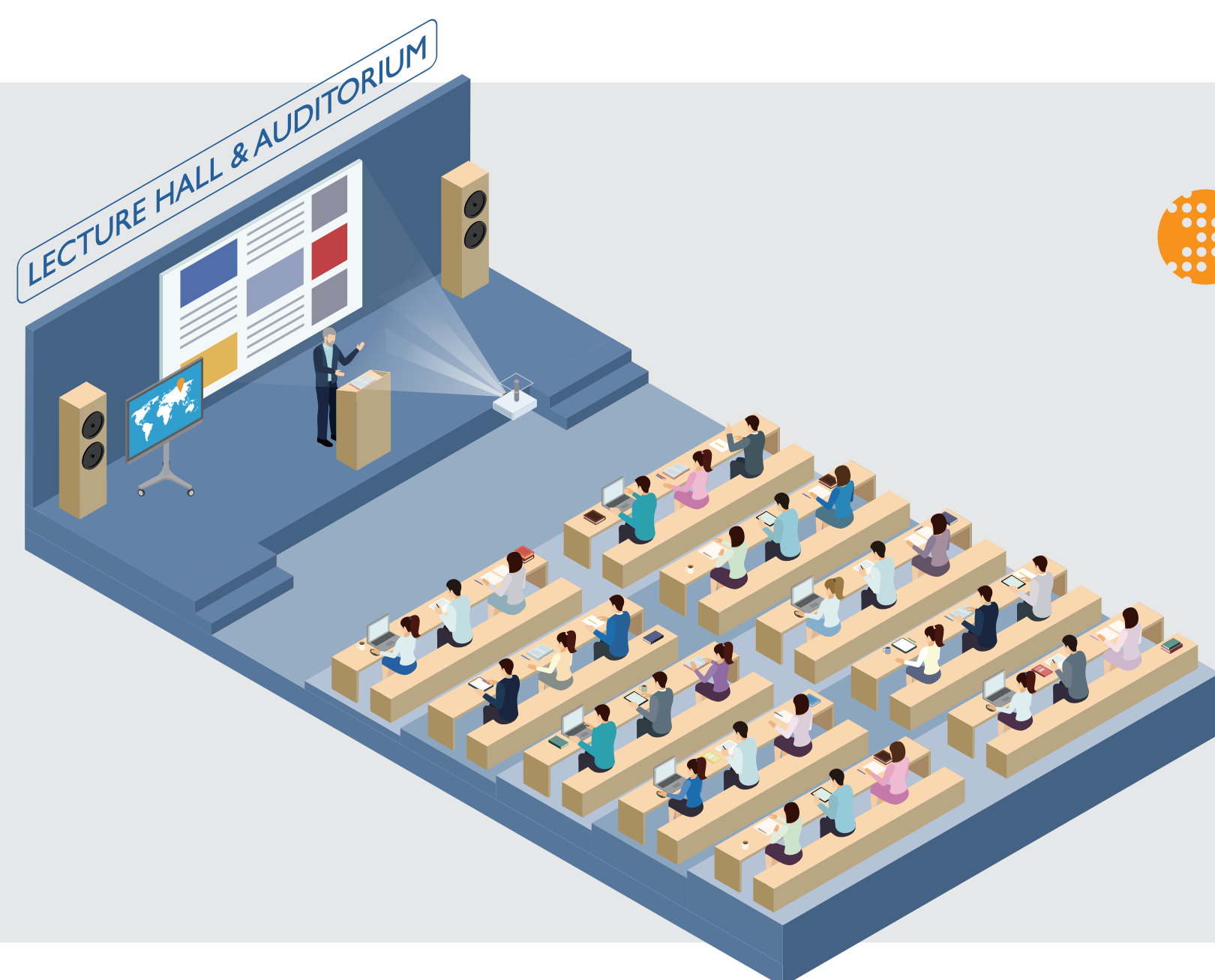
- Interactive Projectors: Short Throw and Ultra Short Throw Projector
- Interactive Flat Panel: 65", 70", 75" RP Series



FUNCTION ROOM (more than 10 people)

4K Laser Projectors and Interactive Flat Panels can coexist In larger classrooms as well as be seamlessly connected to a Wireless Presentation System to enrich the overall teaching process.

- Installation Projector: 5000 Lumens Laser Projector
- Interactive Flat Panel : 65", 70", 75", 86" RP Series
- Smart Signage: 43", 55", 65", 75", 86" ST Series



LECTURE HALL & AUDITORIUM

Enabled by BlueCore laser and dual lamps, Large Venue Projectors with ultra-high brightness are designed for mass public spaces where the audience is 30 feet away or more from the screen. In more advanced setups, interactive flat panels can also be added as assistant screens.

- Large Venue 8000 ~ 10000 Lumens Laser Projector
- Interactive Flat Panel : 86" RP Series
- Digital Signage : Video Wall: 49", 55" PL Series
- Wireless Presentation System: InstaShow & InstaQShare



SCHOOL HALL & BULLETIN BOARD OPEN AREAS

Smart Signage and Interactive Signage provide information services in school halls and bulletin board areas and require centralized control and broadcast across multiple locations.

- Smart Signage : 43", 55", 65", 75", 86" ST Series
- Interactive Signage: 43", 49", 55" IL Series



Let us help innovate your business with effective cost-efficient productivity
Find us more: <https://business-display.benq.com>

©2018 BenQ Asia Pacific Corp. Specification may vary by region, please visit your local stores for details. Actual product's features and specifications are subject to change without notice. This material may include corporate names and trademarks of third parties which are properties of the third parties respectively.
AU_JGGS_1810E

BENQ DISPLAY